

ERICKSON'S ARTIFICIAL EYES - PAULSEN BLDG
421 W. RIVERSIDE AVE. Suite 770, SPOKANE, WA 99201
Phone # 509-747-6148

APPOINTMENT SCHEDULE

Fabrication of your artificial eye is custom. **Please keep in mind that all scheduled appointment times throughout your stay with us are tentative and subject to change. Please allow your schedule to shift in case this happens.** We ask that you keep the time frames open from start to finish, and do not schedule any events or appointments in between your appointments with us.

Date: _____	Time: _____	Span: _____	IMPRESSION
Date: _____	Time: _____	Span: _____	PAINTING
Date: _____	Time: _____	Span: _____	FITTING
Date: _____	Time: _____	Span: _____	VEINING
Date: _____	Time: _____	Span: _____	DELIVERY
Date: _____	Time: _____	Span: _____	FINAL CHECK

PARKING OPTIONS NEAR ERICKSON'S

****Erickson's does not validate parking****

ALL PARKING RATES ARE SUBJECT TO CHANGE

****FYI: oversized vehicles can ONLY park in a parking lot if they do not fit at a street meter or in a garage*

U.S. Bank Diamond parking lot

HonkMobile App: Zone # B0282

420 W Riverside (north of Paulsen Bldg, on Riverside between Washington and Stevens)

\$ rates subject to change

You will need: license plate # and car make/model/year

TO PAY:

1. text **B0282** to # 75498

OR

2. scan QR code on sign

OR

3. download the HonkMobile app

OR

4. online: <https://parking.honkmobile.com/hourly/zones/B0282>

1hr = \$3.97, 2hr = \$6.39, 3hr = \$8.81, 4hr = \$11.23, 5hr = \$13.65,
6hr = \$16.07, 7hr = \$18.49

****MUST HAVE SMARTPHONE/TABLET/INTERNET****

****CREDIT / DEBIT CARD ONLY****

****HANDICAP PLACARD STILL REQUIRES PAYMENT****

VIEW ON GOOGLE MAPS:

<https://maps.app.goo.gl/1jbSpZoStwGs4AFg7>



Diamond parking lot

ParkMobile App: Lot B281 / Zone # B201281

331 W Riverside (east of Paulsen Bldg, on Washington between Sprague and Riverside)

\$ rates subject to change

You will need: license plate # and car make/model/year

TO PAY:

1. text **Park** to # 772238

OR

2. scan QR code on sign

OR

3. download the ParkMobile app

OR

If you do not have a smartphone,
please call to pay: 877-727-5975

2hr = \$8.82, 3hr = \$12.45, 4hr = \$16.08, 5hr = \$19.71, 6hr =
\$23.35, 7hr = \$26.98, 8hr = \$30.61

****CREDIT / DEBIT CARD ONLY****

****HANDICAP PLACARD STILL REQUIRES PAYMENT****

VIEW ON GOOGLE MAPS:

<https://maps.app.goo.gl/1qvcCQvNkXHTdbsrq>



Paulsen Center Garage/Valet parking

421 W Riverside (garage entrance is UNDER Paulsen Bldg, on Washington between Sprague and Riverside)

\$ rates subject to change

TO PAY:

1. pay upon departure

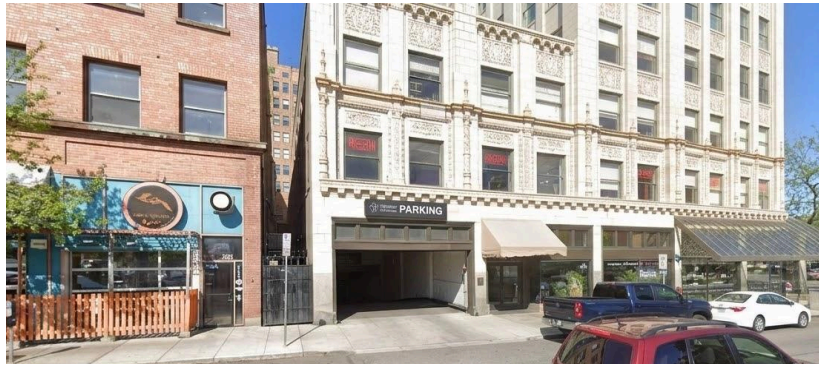
****CREDIT / DEBIT CARD ONLY****

****HANDICAP: please call # below to inquire if payment is required****

****Erickson's does not valid parking****

1hr = \$8, additional = \$4, all day (6+hrs) = \$32

Paulsen phone # 509-624-6788



VIEW ON GOOGLE MAPS:

<https://maps.app.goo.gl/FrFjt8uUACjzt9G7>

The Parkade parking garage

511 W Main, Ste 202 (garage entrance is just east of Howard, on Main - 1 block northwest from Paulsen Bldg)

\$ rates subject to change

TO PAY:

1. pay upon departure or 2. online: <https://parkadespokane.com/>

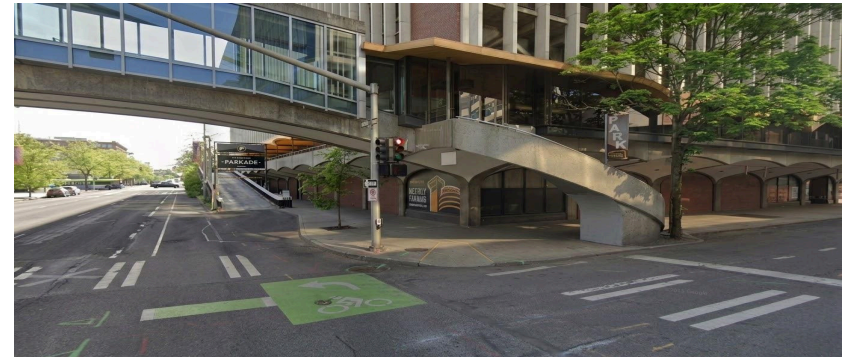
****CREDIT / DEBIT CARD ONLY****

****HANDICAP: please call # below to inquire if payment is required****

0-2hrs = \$5, each additional 1/2 hr = \$1, up to 17+hrs = \$17 max
***enter before 9am = \$9 max for all day

Parkade phone # 509-747-7021

Email: parking@parkadespokane.com



VIEW ON GOOGLE MAPS:

<https://maps.app.goo.gl/LxkBBOPHfp2AJAix9>

Metered street parking also available throughout downtown Spokane:

TO PAY: **use CREDIT / DEBIT CARD, coin and/or the Passport App or website: passportparking.com, and/or the ParkMobile App or website: parkmobile.io/

HANDICAP PARKING: FREE FOR 4 HOURS AT ALL METERED PARKING*

PARKING FAQ & FYIs:

Where can I park?

- Street parking meters are located all over downtown.
- There are several parking lots near the Paulsen Building and are within 0-2 blocks.
- There are a few parking garages near the Paulsen Building (Valet garage parking is available under the Paulsen Building, and the Parkage parking garage is a few blocks away).

What forms of payment can I use to pay for parking?

- Accepted payment methods are coins, debit/credit cards, or a smartphone or tablet.
- Some parking lots may require a smartphone or internet access to pay.
- Parking garages and parking lots require payment using credit or debit cards.
- Street parking meters allow coins, debit or credit cards.
- Coins are **only** accepted at street parking meters, but credit or debit cards can also be used.

What is the cost to park?

- Street meters *typically* charge \$1-3 per hour; rates are subject to change.
- Parking lots *typically* charge \$4-8 per hour; rates are subject to change.

Is there any free parking?

- Free parking is only available after 7pm at street meters and on Sundays. There is no free parking available in parking lots and garages.

*****Please note:** \$1.70 is the minimum charge if paying by credit/debit cards at street meters, kiosks and ParkMobile.

*****ParkMobile** can be used at all on-street locations where payment is required.

*****Oversized vehicles/RVs/Campers** can ONLY be parked in a parking lot, NOT at a street meter or garage

If you have any questions, please contact Erickson's at # 509-747-6148

DOWNTOWN SPOKANE HOTELS

This list includes our most recommended hotels based on closeness, safety and cleanliness.

FYI: ALL RATES ARE SUBJECT TO ROOM AVAILABILITY

- **DAVENPORT GRAND, DAVENPORT COLLECTION (MARRIOTT) 1 block away (closest to us)**

333 W Spokane Falls Blvd, PH # 509-458-3330

Complimentary Wi-Fi, street parking, garage / Valet parking, NO pets

*Discount on lowest available rate available: Use Corporate Code: A2626

- **HOTEL LUSSO, DAVENPORT COLLECTION (MARRIOTT) 3 blocks away**

808 W Sprague Ave, PH # 509-747-9750

Complimentary Wi-Fi, Bicycle rental, \$ daily parking

*Discount on lowest available rate available: Use Corporate Code: A2626

- **BEST WESTERN - four blocks away**

33 W. Spokane Falls Blvd, PH # 509-623-9727

\$ + tax everyday ERICKSON'S FLAT RATE: tell them you're here for Erickson's

Free outdoor parking, assigned garage parking \$ nightly, complimentary breakfast

- **RIVERFRONT PARK TRAVEL APARTMENTS 4 blocks away**

218 N Bernard, Spokane, PH # 866-648-1322

Rates are subject to room availability, *\$90-\$100 cleaning fee applied per reservation

Full kitchen, in-unit laundry, street parking, complimentary Wi-Fi, NO pets, no breakfast

*Free Cancellation within 24 hours of booking and UP TO 14 days prior to check-in

*Cancellation between 13 and 8 days prior to check-in is eligible for 50% refund

*Reservation is nonrefundable within 7 days of check-in

- **DOUBLETREE BY HILTON CITY CENTER 4 blocks away**

322 N. Spokane Falls Ct, PH # 509-455-9600

\$ + tax weekday only "hospital care rate" (subject to room availability)

Outdoor pool, \$ WiFi, pets allowed w/ \$ non-refundable deposit

Parking: \$ nightly self park + 1 free chocolate chip cookie per occupant!

*****CALL TO BOOK IF REQUESTING MEDICAL RATES:** *These hotels are nearest to Erickson's and **may** offer medical/hospital rates. Prices are subject to change per each hotel. Sundays, in general, are deemed as "weekday" and should be covered at the weekday medical/hospital rates. Please be sure to call ahead and ask for this special medical rate (rates are subject to change from season to season) which may or may not be available.*

DOWNTOWN SPOKANE HOTELS

... continued

- **DAVENPORT TOWER, DAVENPORT COLLECTION (MARRIOTT) 5 blocks**

111 S Post St, PH # 509-789-6965

Complimentary Wi-Fi, street parking, Valet parking (AT HISTORIC DAVENPORT)

*Discount on lowest available rate available: Use Corporate Code: A2626

- **HISTORIC DAVENPORT (MARRIOTT) 5 blocks away**

10 S Post St, PH # 509-326-8000

Complimentary Wi-Fi, Valet or \$ self parking, street parking, indoor pool & hot tub

\$ bicycle rental, 2 dogs allowed per room w/ \$ non-refundable deposit

*Discount on lowest available rate available: Use Corporate Code: A2626

- **FAIRFIELD INN (MARRIOTT) 5 blocks away**

311 N. Riverpoint Blvd, PH # 509-747-9131

\$ + tax weekday only medical/hospital rate (subject to room availability)

Free lot parking, free continental or grab-&-go breakfast, indoor pool/hot tub ----- NO pets allowed, complimentary WiFi

- **STEAMPLANT HOTEL 6 blocks away**

123 S Post St, PH # 509-290-5209

Dogs allowed, on-property parking \$ nightly, complimentary bicycles & Wi-Fi

No food provided but they offer a 10% discount to some local restaurants

- **HOTEL RUBY - 6 blocks away**

901 W. 1st Ave, PH # 509-747-1041

\$ + tax weekday only medical/hospital rate (subject to room availability)

\$ nightly parking, complimentary bicycles, dogs allowed w/ \$ non-refundable deposit

- **MONTVALE HOTEL - 7 blocks away**

1005 West 1st Ave, PH # 509-624-1518

\$ + tax weekday only medical/hospital rate (subject to room availability)

Street parking or \$ nightly @ Montvale, complimentary bicycles & WiFi

Dogs allowed w/ \$ non-refundable per night

*****CALL TO BOOK IF REQUESTING MEDICAL RATES:** *These hotels are nearest to Erickson's and **may** offer medical/hospital rates. Prices are subject to change per each hotel. Sundays, in general, are deemed as "weekday" and should be covered at the weekday medical/hospital rates. Please be sure to call ahead and ask for this special medical rate (rates are subject to change from season to season) which may or may not be available.*

DOWNTOWN SPOKANE HOTELS

... continued

- **BAYMONT by WYNDHAM SPOKANE - 8 blocks away**

907 W. 3rd Ave, PH # 509-279-2909

\$ + tax medical rate offered 7 days a week plus \$ refundable damage deposit

Complimentary Wi-Fi & parking & breakfast

- **THE CENTENNIAL, DAVENPORT COLLECTION (MARRIOTT) - across the river**

303 W North River Drive, PH # 509-326-8000

Complimentary Wi-Fi, small pets allowed, free outdoor parking, seasonal outdoor pool

*Discount on lowest available rate available: Use Corporate Code: A2626

- **HOLIDAY INN EXPRESS - across the river**

N. 801 Division Street, PH # 509-328-8505

% off regular room rate weekdays only “hospital” rate (need to ask for availability)

Free Breakfast, 1 Free Parking Spot Per Registered Room - NO TRAILER/RV/TRACTOR (additional paid lot @ bottom of hill)

- **OXFORD SUITES - across the river**

115 W North River Drive, PH # 509-353-9000

Complimentary breakfast, pets allowed w/ deposit, lot parking at hotel

Pool/spa/sauna/steam-room, complimentary Wi-Fi

Rates are subject to room availability

- **RUBY RIVER HOTEL - across the river**

700 N Division St, PH # 509-326-5577

Free parking in attached lot, shuttle service available, pool, Wi-Fi available

Pets allowed w/ \$ cleaning fee (not allowed for pool-side rooms)

This list includes our most recommended hotels based on closeness, safety and cleanliness.

If you need assistance, please contact Erickson’s at p# 509-747-6148

***CALL TO BOOK IF REQUESTING MEDICAL RATES *These hotels are nearest to Erickson’s and may offer medical/hospital rates. Prices are subject to change per each hotel. Sundays, in general, are deemed as “weekday” and should be covered at the weekday medical/hospital rates. Please be sure to call ahead and ask for this special medical rate (rates are subject to change from season to season) which may or may not be available.*